



# Roxtec CF 16 관통 장비

높이가 낮은 금속 프레임을 갖춘 관통

Roxtec CF 16은 인클로저에 사용되는 높이가 낮은 경우 적합한 케이블 인입구 씰입니다. 관통 장비는 분말 코팅된 연강 또는 스테인리스 스틸과 개방형 버전으로 제공됩니다. 스테인리스 스틸 버전은 IP 69K 등급입니다.



- 경량
- 공간 효율성
- 케이블 말단 처리 허용

## 제품 특징점



IP/UL NEMA

## 설치 구조



캐비닛 및 인클로저

## 장착 유형



볼트체결

## 등급 및 인증

강도

- IP 66/67, IP 69K, UL/NEMA 4,4X,12,13

## 프레임 치수

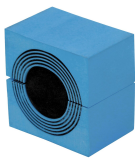
mm/kg

아래의 프레임 변화는 제한된 선택입니다. 프레임 및 구성의 전체 범위를 보려면 [roxtec.com](https://www.roxtec.com)을 방문하십시오.

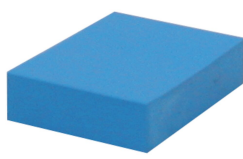
구성	프레임 입구	모듈설치공간	외부 치수 WxHxD	홀 치수 w x h	무게	Art. 번호
CF 16	1	40 x 160	93 x 234 x 42	71(+1/-1) x 187(+2/-0.5)	1.4	CSF0000160010
CF 16 AISI304	1	40 x 160	93 x 234 x 42	71(+1/-1) x 187(+2/-0.5)	1.4	ECF0001600021
CF 16 AISI304 OPEN	1	40 x 160	93 x 234 x 42	71(+1/-1) x 187(+2/-0.5)	1.2	5CF0000004946
CF 16 OPEN	1	40 x 160	93 x 234 x 42	71(+1/-1) x 187(+2/-0.5)	1.4	CSF1000160010

## 씰링 컴포넌트 데이터

씰링 컴포넌트



CM 모듈(Multidiometer™)



CM 슬라이드 모듈




윤활제


자세한 내용은 [roxtec.com](https://www.roxtec.com)을 방문하십시오.

키트 구성의 관통장비


mm/kg




CF 16/4



CF 16/10



CF 16/16



CF 16/19

구성	구성	외부 치수 WxHxD	홀 치수 w x h	무게	Art. 번호
CF 16/4	4x (9.5-32.5)	93 x 234 x 42	71(-2) x 187	1.7	CKT0008020004
CF 16/10	2x (9.5-32.5), 8x (3.5-16.5)	93 x 234 x 42	71(-2) x 187	1.7	CKT0008020010
CF 16/16	16x (3.5-16.5)	93 x 234 x 42	71(-2) x 187	1.7	CKT0008020016
CF 16/19	1x (9.5-32.5), 6x (3.5-16.5), 12x (3.5-10.5)	93 x 234 x 42	71(-2) x 187	1.7	CKT0008020119

The product information provided by Roxtec does not release the purchaser of the Roxtec system, or part thereof, from the obligation to independently determine the suitability of the products for the intended process, installation and/or use.

Roxtec gives no guarantee for the Roxtec system or any part thereof and assumes no liability for any loss or damage whatsoever, whether direct, indirect, consequential, loss of profit or otherwise, occurred or caused by the Roxtec systems or installations containing components not manufactured by an authorized manufacturer and/or occurred or caused by the use of the Roxtec system in a manner or for an application other than for which the Roxtec system was designed or intended.

Roxtec expressly excludes any implied warranties of merchantability and fitness for a particular purpose and all other express or implied representations and warranties provided by statute or common law. User determines suitability of the Roxtec system for intended use and assumes all risk and liability in connection therewith. In no event shall Roxtec be liable for indirect, consequential, punitive, special, exemplary or incidental damages or losses.

The Roxtec products are offered and sold in accordance with the conditions of the Roxtec General Terms of Sales. The latest version of the Roxtec General Terms of Sales can be downloaded from <https://www.roxtec.com/en/about-us/about-roxtec/general-terms-of-sales/>

We reserve the right to make changes to the product and technical information without further notice. Any errors in print or entry are no claims for indemnity. The content of this publication is the property of Roxtec International AB and is protected by copyright.

This document was generated on: 2024-04-10